

P L A C E M E N T - 2015

A black and white photograph of a person's arm, wearing a dark sleeve, holding a glowing globe. The globe is illuminated from within, creating a bright starburst effect. The background is dark, making the arm and the glowing globe stand out.

the support  
that makes you  
shine



Marwadi  
education foundation

## CONTENTS



› MESSAGES .....	01
› TECHNICAL CAMPUS - KEY FUNCTIONARIES .....	02

## PART I

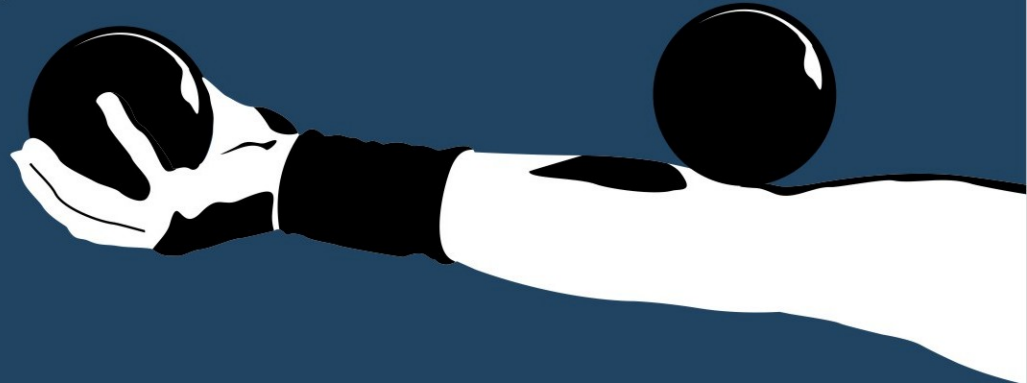
› ABOUT US .....	03-04
› ORGANOGRAM : THREE TIER STRUCTURE .....	05
› PRIMARY INSTITUTIONS: COMPETENCIES .....	07-08
1: Infrastructure   2: Faculty   3: Research, Consultancy and Publications   4: Corporate Connect and Secondary Institutions	
› SECONDARY INSTITUTIONS .....	09
› TERTIARY INSTITUTIONS .....	10

## PART II

› PLACEMENT OFFICE .....	12
› CAPABILITIES .....	12
› FUNCTIONS OF TIPO .....	13
› PLACEMENT PROCESS .....	14
› DISTINGUISHED ACHIEVEMENTS OF TIPO .....	15
› PLACEMENT SNAPSHOT TILL DATE .....	16

## PART III

› OUTPUT PRODUCT : STUDENTS PASSING OUT IN 2014-15 .....	17
› MEFGI DIFFERENCE: BETTER EQUIPPED STUDENTS .....	19
› STUDENT'S INTEREST AREAS .....	20
› INDUSTRY WISE INCLINATION OF THE STUDENTS .....	22
› EVENTS .....	23-24
BHARTIMELA 2014   HR MEET 2014	
› MEMORANDUM OF UNDERSTADING (MOUs) .....	25-26
› EMPLOYERS ACCOLADES .....	27-28
› SOME OF OUR WELL PLACED STUDENTS .....	29-34
› OUR PLACEMENT/PROJECTS FACILITATORS .....	35-36
› MESSAGE FROM PLACEMENT OFFICE .....	37
› CONTACT US   REQUEST FOR INFORMATION .....	37-38



## MESSAGES



MEFGI is defined by the capacity building measures for the young professionals to enable them to participate in the economic process and contribute to the national development. We also take due care to ensure their holistic development in terms of right ethical orientation, cultural awareness and active citizenship.

At MEFGI we strive to produce quality human resources in alignment with the industry needs, who can essentially add value to the organization wherein they join post completing their academic programs with us.

I thank you very much for the kind support extended by you in the last years through the wonderful journey of MEFGI. We hope to further accelerate the momentum gained by increasing the interactions and the activities. For similar kind of support wherein we can interact and grow together, I extend a warm welcome to you to visit our campus

**KETAN H. MARWADI- CHAIRMAN**



MEFGI is a community of students and staff dedicated to bring out the best in all its members. Our aim is to provide the finest possible environment for teaching, learning and research.

At MEFGI we envision a time when youth from different regions is engaged in all sectors of technology and management where issues affecting young people are debated and decisions made.

At MEFGI we create a network of youth empowered with skills and knowledge, to be able to contribute to healthy economy and growth of the society and nation

I take this opportunity to thank very much for the support extended by all those esteemed organizations since inception and extend a cordial invitation to you to participate in our Campus Placement Program to consider our students graduating in June/July 2015.

**JITENDRA A. CHANDARANA - VICE CHAIRMAN**



The form of education we need today is not just to create an informed set of individuals; instead develop individuals- with character, commitment, conviction, courtesy and courage, who are cultured, who can shoulder the responsibility of taking the nation forward and making it stronger than ever before. A true broad based education prepares students for life, without losing their areas of specialization and competence. I am quite confident, at MEFGI, you would find candidates meeting your requirements in practically every field of interest to your organization.

**DR. Y.P. KOSTA - DIRECTOR-TECHNICAL CAMPUS**



Mentoring a student continuously is a way of life at the MEFGI so that the student can not only pick up tips on how to make a living but also learn how to live. The teaching=learning process at this campus aims to create an equal responsibility for the Learner as well as the teacher.

Education isn't what you learn, it's what you do with what you learn. Develop a passion for learning. Aristotle said, "The roots of Education are bitter, but the fruits are sweet".

**PROF. S.K. BHAGAVAN - DIRECTOR-LEARNING & DEVELOPMENT CENTRE**



## TECHNICAL CAMPUS - KEY FUNCTIONARIES



**DR. S.C. REDDY**  
Dean, Faculty of Management



**DR. RAJENDRASINH JADEJA**  
Dean, Faculty of Engineering & Faculty of Technology



**DR. R. SRIDARAN**  
Dean, Faculty of Computer Application



**DR. RAMDEVSIKH JHALA**  
Principal, Faculty of Technology

**Mr. GEORGE VARUGHESE**  
Registrar

### PLACEMENTS

**MR. K.S.R. SWAMY**  
Corporate Manager

**MR. URMISH VAISHNAV**  
Asst. Vice President – Placements & PR

### TRAINING

**Mr. Pravin Jain**  
Sr. VP-Training



PART-I

## ABOUT US

---



MEFGI is the primary organ registered under Marwadi Education Foundation Trust. The primary objective is to contribute to the growth & development of professional technical education for the economic growth of this country. Our technical campus is one of its first kind integrated technical institutions offering various programs (Engineering & Technology, Computer Application & Management) and a multitude of courses in the state of Gujarat



## ORGANOGRAM - THREE TIER STRUCTURE



MEFGI has a unique three layer learning structure to ensure that we are producing quality human resources who understand the value of giving back to the society.

### Layer 1: Primary Institutions

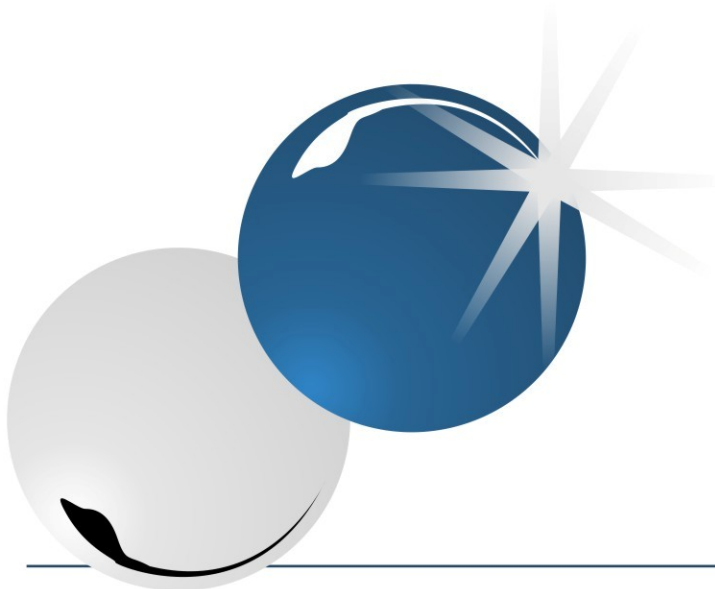
In this layer, we have colleges providing programs in Engineering, Management Studies and Computer Applications

### Layer 2: Secondary Institutions

To improve employability of the students, to bring innovation and entrepreneurship and to further strengthen the research capabilities of the group, we have created secondary institutions.

### Layer 3: Tertiary Institutions

To make the students more competent by imparting life skills, leadership skills and to foster the spirit of respect towards the society we have created tertiary institutions.





**MEFGI**

**TERTIARY  
INSTITUTIONS**

**SECONDARY  
INSTITUTIONS**

**PRIMARY  
INSTITUTIONS**

**MANAGEMENT**

**COMPUTER  
APPLICATIONS**

**ENGINEERING**

School of  
Community  
Education &  
Rural  
Development

School of  
Yoga &  
Meditation

Social &  
Morality  
Club

School of  
Sports

PGDM

MBA

Dual  
MAM

Civil Engg.  
BE & ME

Environmental  
Science Engg.  
BE

Electrical  
Engg.  
BE & ME

Chemical  
Engineering  
BE

Automobile  
Engg.  
BE

Information  
Technology  
BE

Instrumentation  
& Control  
BE

Mechanical  
Engg.  
BE & ME

Electronics  
& Comm.  
BE & ME

Computer  
Engg.  
BE & ME

School Of  
Virtual Reality,  
Simulation,  
Modeling,  
& Software

**TIPO**  
Training,  
Information &  
Placement  
Office

M-CIRED

Tech.  
Clubs

School Of  
Science

School Of  
Liberal  
Studies

IIIC

Dual  
Degree  
MCA

MCA



## PRIMARY INSTITUTIONS: COMPETENCIES



### Infrastructure:

- › 25 Acres, Wi-Fi enabled, 240 MBPS internet lease line, 3 computer centres (1000 computers)
- › Best and comparable to any of the leading educational institutes of India.
- › Sophisticated laboratories in each department having industry grade equipment. Some labs like Mechatronics lab is at an outlay of Rs 3 Crore and another with Bosch at an outlay of Rs 1 Crore are offering testing solutions not only to the faculty and students, but to the professionals from outside also. Geo Technical Lab and Highway Lab are some of the new additions to the existing facilities
- › State of the art residential facilities on the campus for boys, girls and faculty adequately sufficed by gyms, playing grounds, a virtual lake and recreation areas.
- › Seminar hall with a capacity of 600 students, an auditorium with a capacity of 1200 people, 6 interview rooms for TIPO



## Faculty:

- › The Director and Deans have a minimum experience of 18 years and have come from premium institutions like ISRO, Stanford, IIT, Silicon Valley, and DAIICT and so on.
- › 15% of the faculty has Master's Degree from foreign universities.
- › We conduct yearly campus drives for faculty selection with top 20 Institutes of the country

### FACULTY SNAPSHOT OF MEFGI

Faculty	Post Grads	PhD	Total	Exp>10Yrs	Exp>5 Yrs	Exp>1Yrs	Previous Experience of the Faculties
Engg.	100%	7%	243	52	76	46	Stanford, ESC Clermont, IIT, NIT, IIM, MSU, SRM, Thapar, VIT, DU Jadavpur Uni.and other premium institutions across India and from US, EU, UK.
MBA	100%	10%	43	13	15	15	
MCA	100%	15%	22	6	6	10	

## Research, Consultancy and Publications:

MEFGI is very aggressive in research area and MEFGI is one of the few educational groups in the country to have a comprehensive framework for its faculty who wishes to pursue higher research.

Faculty	Conference	Journal	Book	FEDP
Engg. & Tech.	17	32	15	39
MCA	15	23	9	9
Management	13	19	8	11
Total	45	74	32	59

## Corporate Connect and Secondary Institutions

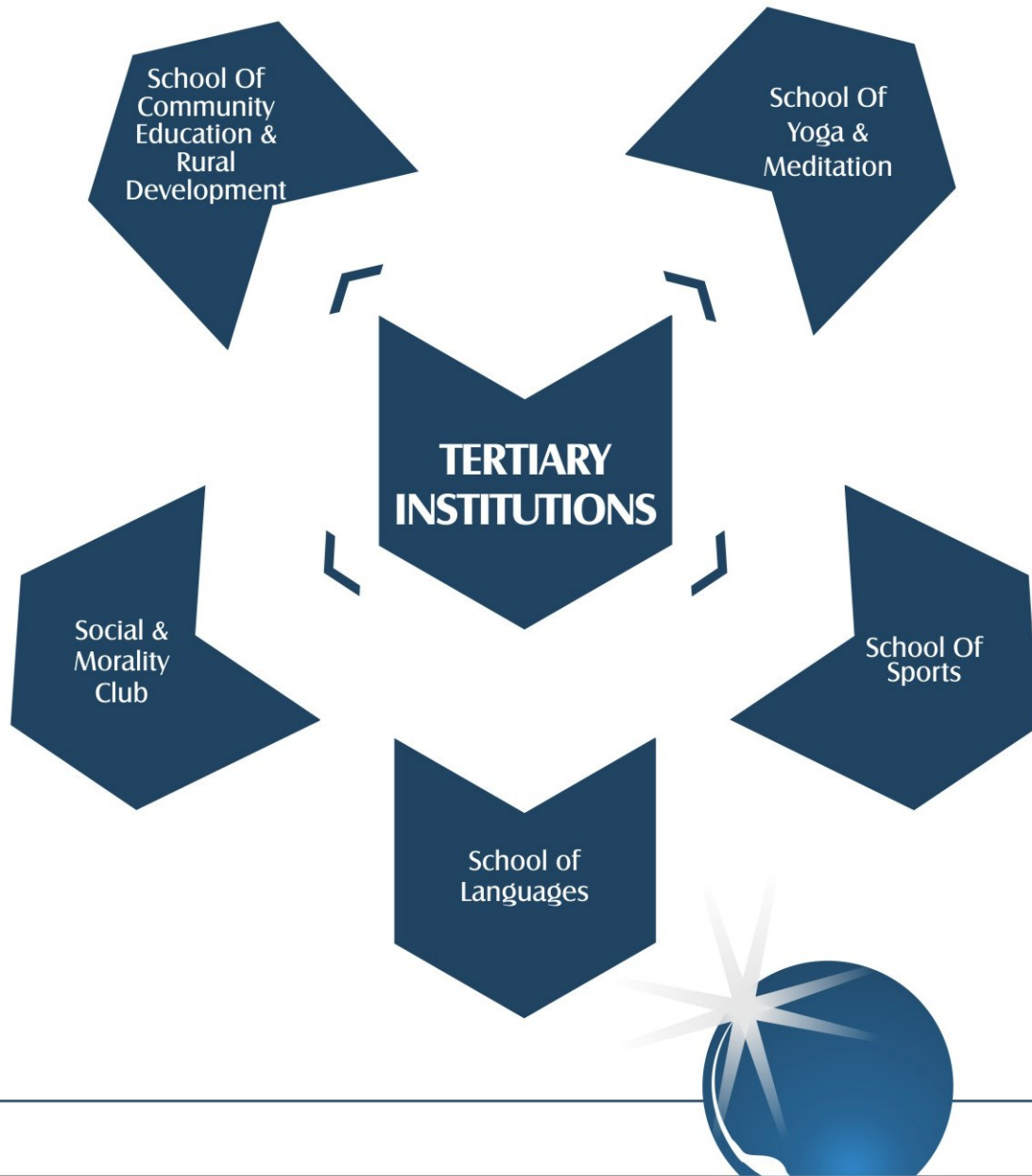
In a short span, MEFGI has established very strong corporate relations as we understand that there has to be synchronization between our needs and the demands of the corporate.

## SECONDARY INSTITUTIONS





## TERTIARY INSTITUTIONS



# PART-II



## PLACEMENT OFFICE

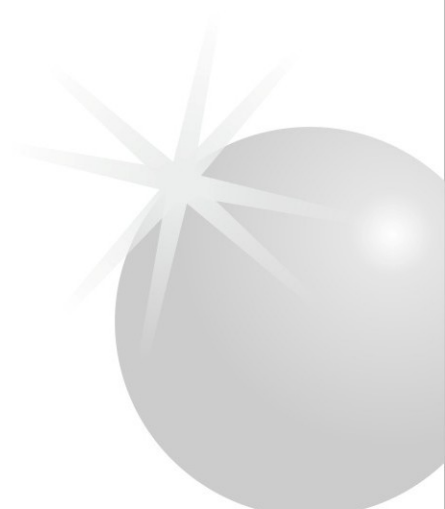


MEFGI has an independent vertical that plays the pivotal role of connecting two important ends, vis-a-vis school and industry. It establishes a bridge between schools and institution (input-end, at the entry level) and institution and industry (output-end, after graduation).

Today corporate needs thinking, flexible and proactive workers who are accustomed to collaborate with co-workers to achieve set deliverables and are professionals to the core. To support such a vision we have devised a structure with the sole aim of overall development of the students getting out of the campus. The structure has also envisaged the personal needs of these students who should learn the value of giving back to society.

### CAPABILITIES

Placement Office is well-equipped with the latest technologies and huge Infrastructure. TIPO is having 20 rooms for training, pre-placement talks, seminars, workshops, counselling, meetings; group discussions, and personal interviews. There is a separate student facility centre where students can get the information, access company databases and apply for the jobs. TIPO comprises of a high powered committed team of 21 senior trainers and placement professionals, some of whom have seen 7 cycles of placement.



## FUNCTIONS OF PLACEMENT OFFICE



Following activities are organized and conducted by TIPO for students, faculties, admin staff and adopted communities:

- › Networking with prominent members of various industries to understand the need of the industry and train the students accordingly.
- › Provide placement opportunities to the students in the companies across India according to their choice and in alignment with the pre determined career path.
- › Frequently organizes in-plant training, visits, executive training and induction programs for technical and management cadre.
- › Strategic Developmental Programs for working professionals, schools (teachers and students), students and associated communities.
- › Post the training need analysis, conducts comprehensive training programs throughout the year for up skilling the students in following areas:
  - Communication Skills
  - Personality Development
  - Aptitude
  - Computational Skills
  - Organizational Citizen Behaviour
  - Domain Specific Knowledge
- › Entrepreneurship, innovation and managerial skilling programs.
- › Rural and community development outreach programs.
- › Hearing engaging speakers from our outstanding base of alumni and professors, as well as from outside illustrious Corporate personalities participating in specialized or wide-interest round-table discussions and forums
- › Interacting with other top Engineering and Management colleges across India for mutual sharing of knowledge



## PLACEMENT PROCESS



### **Receiving Request**

Receiving Request from Company for Manpower along with JD

### **Pre-Screening**

Pre-screening the Student Database According to the company's Requirements

### **Holding Information**

Holding Information Symposium for creating awareness about the company

### **Registration**

Getting the Students Registered for the Campus Interview

### **Placement Process**

Organizing Campus placement Process

### **Joining Process**

Assisting the Companies & Students in Joining Process

## DISTINGUISHED ACHIEVEMENTS OF TIPO



MEFGI TIPO has an amicable track record of placements in reputed companies from different strata. The companies that came to campus offered a plethora of profiles. By providing an excellent mix of highly qualified faculty, unmatched course content and extra trainings on soft-skills, we ensure that our students are well prepared to step into this volatile corporate world and occupy positions of stature. Training Information and Placement Office of MEFGI has worked very aggressively for the campus placements of students not only from our own college but from other colleges also. Some of the salient features of the placements are:

- › More than 140 companies provided placement opportunities to the students during the academic year 2013-14 for the students passing out in the current year.
- › Total companies to offer placements to the students since inception has crossed 200 this year
- › MEFGI has become the first choice of top corporate from all industries and from diverse geographical locations.
- › Highest package offered to the students of B.E. in excess of 5.0 Lacs per annum and 6 Lacs per annum to the students of MBA
- › We helped students from other colleges to get placed in companies.
- › Equal opportunities were provided to the male and female students.
- › Indian Army one of the regular visitors to MEFGI campus for hiring and creating awareness.

## PLACEMENT TEAM



**Mr. K.S.R. Swamy**

Corporate Manager & Team Lead for MCA/MBA/PGDM

M. +91 97277 24695 / 90999 74026 | Email: k.s.r.swamy@marwadieducation.edu.in

**Mr. Urmish Vaishnav**

Asso. Vice President – PR & Placements – Engineering (B.E./M.E.)

M. +91 97277 24677 | Email : urmish.vaishnav@marwadieducation.edu.in

**Mr. Gaurav Gandhi, Sr. TPO, Ahmedabad.**

M. +91 9687 680240 | Email: gaurav.gandhi@marwadieducation.edu.in

**Mr. Haresh Bhasani, TPO, Vadodara.**

M: +91 96876 80225 | Email: haresh.bhasani@marwadieducation.edu.in

## PLACEMENTS@MARWADI - SNAPSHOT

Program	Year of Passing	Total Students	Students who Applied for Placements	No. of Companies Visited	Year of Visit	Students Placed	Placement % age of students opting for Placements	Highest Package (Lacs per annum)
MBA	2011	53	38	15	2010-11	38	100	6
	2012	143	100	18	2011-12	100	100	4
	2013	172	121	38	2012-13	106	88	4
	Jun-14	353	102	42	2013-14	92	90	4
PGDM	2012	31	23	18	2011-12	22	95	3
	2013	27	18	38	2012-13	10	66	3
	Jun-14	18	11	5	2013-14	7	64	2.5
MCA	2012	42	31	7	2011-12	28	90	2
	2013	49	38	9	2012-13	38	100	3
	Jun-14	139	86	43	2013-14	86	100	3
Engg.	2013	254	187	21	2012-13	127	69	5
	Jun-14	398	278	60	2013-14	75	27	3.5



# PART-III



## OUTPUT PRODUCT: STUDENTS PASSING OUT IN 2014-15

### Specialization wise Count of the Students

#### FACULTY SNAPSHOT OF MEFGI

Program	Computer Engg	Civil	Electronics & Comm	Electrical	Enviornment Science	IT	Mechanical	VLSI	Total
BE	138	134	138	134	20	71	201	-	836
PG	35	18	21	15	-	-	9	10	108
TOTAL	173	152	159	149	20	71	210	10	944

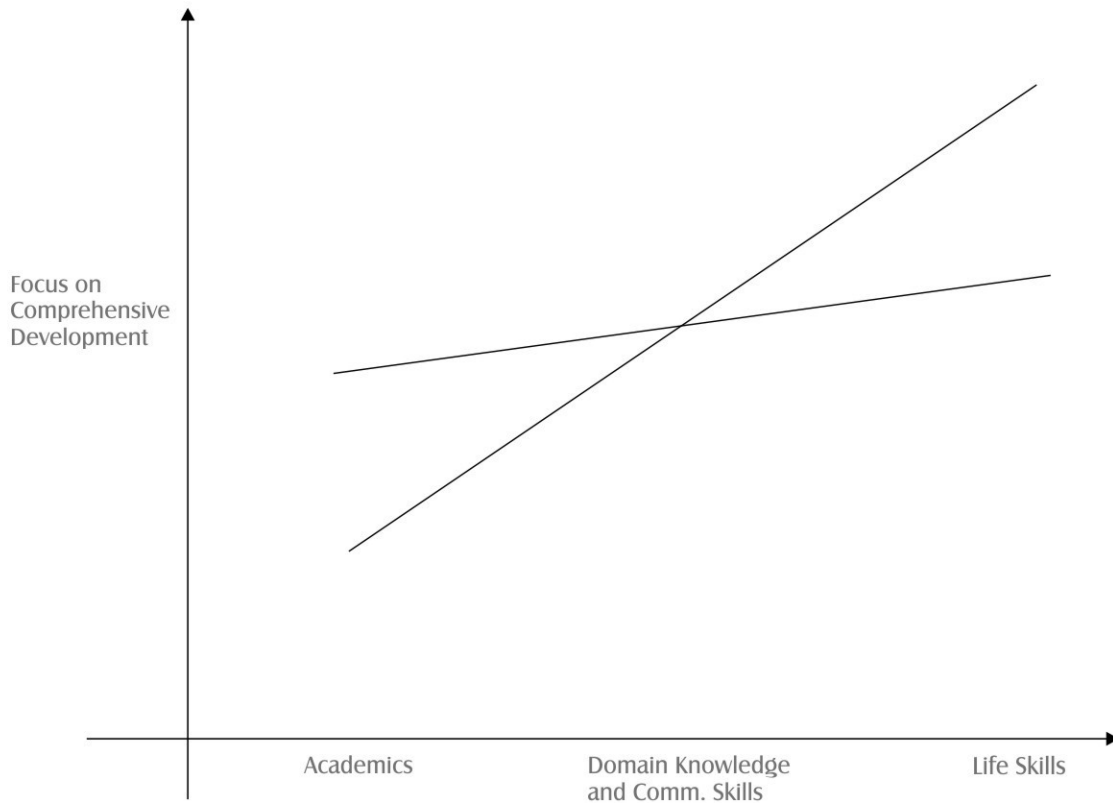
Program	Specialization wise Count of the Students
MBA	301
PGDM	6
MCA	208
Grand Total	515

Program	Headcount
BE-CE	138
BE- CIVIL	134
BE-EC	138
BE-Elec	134
BE- Env. Sci.	20
BE- IT	71
BE- Mech	201
MBA	301
PGDM	6
MCA	208
ME	108

Total Students 1459



## MEFGI DIFFERENCE: BETTER EQUIPPED STUDENTS



The above exhibit explains that an average student of MEFGI has got better skills than her/his counterpart in any other college. This is attributed to the fact that Communication Skills & Life Skills training is an essential part of the coursework. This enables us to train the students keeping in view the industry needs



## STUDENT'S INTEREST AREAS

The count of students passing out in 2015 in ME, MBA, PGDM, MCA and BE is 1036, spread over different disciplines. These students have been provided special skill development programs also, which include soft skills, organization behavioural skills and latest technical skills to meet the demands of the industry.

### Core Engineering

Program	Percentage
BE-CE	10
BE- CIVIL	80
BE-EC	10
BE-Elec	60
BE- Env. Sci.	60
BE- IT	10
BE- Mech	60
MBA	10
PGDM	0
MCA	10
ME	38



## ICT

Program	Percentage
BE-CE	70
BE- CIVIL	0
BE-EC	70
BE-Elec	20
BE- Env. Sci.	20
BE- IT	70
BE- Mech	20
MBA	20
PGDM	0
MCA	70
ME	62



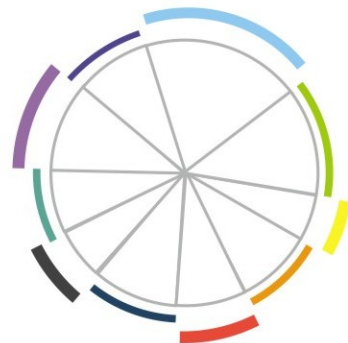
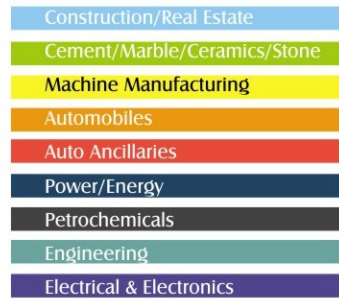
## Service Sector

Program	Percentage
BE-CE	20
BE- CIVIL	20
BE-EC	20
BE-Elec	20
BE- Env. Sci.	20
BE- IT	20
BE- Mech	20
MBA	70
PGDM	100
MCA	20
ME	0



## INDUSTRY WISE INCLINATION OF THE STUDENTS

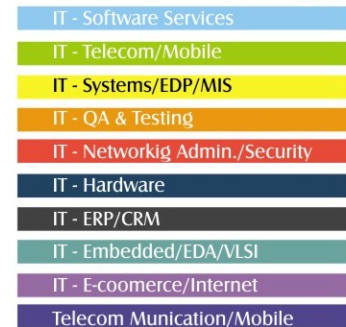
### Core Engineering Sector



### Service Sector



### ICT





### **BHARTIMELA 2014**

BHARTIMELA (Pool Campus Interviews) was jointly organized by BOAT (Board of Apprenticeship Training), Western Zone, Mumbai and MEFGI (Marwadi Education Foundation's Group of Institutions) in the our Technical Campus premises on Saturday, 30.08.2014 from 9.00 AM onwards.

This Drive was organized with a view to facilitate a large pool of fresh Engineering Graduates/ Diploma Holders to Companies for their engagement as Apprentices on one hand and also to provide a great opportunity to candidates to select the Company of their choice to undergo apprenticeship training on the other hand. The selected students will be engaged as apprentices initially and at a later date can be absorbed in to the company based on the successful completion of apprenticeship period.

13 companies registered online and 2 companies walked in to participate in the Drive. Notable among the top brands included :

1. Hindustan Unilever Ltd. (HUL) (Walked in)
2. Adani Power Ltd.
3. Tata Motors Ltd.
4. GMDC (Gujarat Mineral Development Corporation Ltd.)
5. GSECL (Gujarat State Electricity Co. Ltd.)
6. Texspin Bearings Ltd.
7. Gujarat Pipavav Port Ltd.
8. Span Power Pvt. Ltd.

Other companies included :

- |                            |                           |                           |
|----------------------------|---------------------------|---------------------------|
| (1) Echjay Industries Ltd. | (2) Excel Crop Care Ltd.  | (3) Infinity Infoway Ltd. |
| (4) Universal Softech Ltd. | (5) Gujarat NRE Coke Ltd. | (6) Universal Hunt,       |
| (7) Aashna SofTech Ltd.    | (8) Welspun Corpn. Ltd.   |                           |

All the 8 companies conducted test/HR Interviews and shortlisted the candidates. Some of the companies collected CVs and will get in touch with the shortlisted candidates directly keeping both BOAT and Placement Office of MEFGI in loop.

1100+ Degree Holders and 100 Diploma Holders participated in the Campus Drive.

Mr. A.K. Mishra, Asst. Director, BOAT (WR), Mumbai, who was present throughout the event, giving inputs, has expressed his happiness over the arrangements and confirmed that this event will be conducted from now onwards in our Campus year after year.



## HR MEET 2014

Organizing various innovative events for the benefit of students, industry and society is a way of life at Marwadi Education Foundation. In continuation of this tradition and to take it further from where it was left after 1st successful HR Meet in 2013, Marwadi College has successfully organized an HR Meet 2014 on Sunday, 28th Sept. 2014 in its Campus.

This summit was aimed at Industry-Institute interface to bridge the gap by attempting to create a dynamic two way collaborative interface with the Industry. The meet was aimed at brainstorming on the expectation of the Industry from the students and various ways and means to reduce the time and money spent by Industry on making student Industry Ready.

The end objective of the whole summit is to arrive at solutions to raise the employability quotient of the students and to bridge the gap between the perceptions of the industry and academicians.

The HR Meet was attended by a gathering of more than 60 prominent HR Heads from various Rajkot-based industries, TPOs, and RMA officials.



## MEMORANDUM OF UNDERSTANDING (MOUS)



### MEFGI with IBM

Strategic understanding between IBM and MEFGI to work together to offer the University Program. The primary aim of this partnership is to aid MEFGI in establishing a high quality people repository in software technologies. This will help MEFGI teach and train their students on strategic technologies and to position them to support India's Information Technology initiative.



### MEFGI with CISCO

CISCO Networking Academy to train the students to learn the concepts of Computer Network and prepare them for the International Certification.



### MEFGI with Bosch Rexroth India Ltd.

For establishing "Centre of Competence in Automation Technologies" in the campus of Marwadi Education Foundation's Group of Institutions – Faculty of P.G. Studies & Research in Engineering & Technology, Rajkot.



### MEFGI with Jyoti CNC Automation Pvt. Ltd.

For establishing "Research Park for Advanced Automation Technologies"





### MEFGI with Oracle

To enable educational institution to deliver Oracle training to students in their campus and extend opportunities to impart Oracle certified training at an affordable cost.



### MEFGI with Tata Consultancy Services (TCS)

Local Infrastructure Service Provider to TCS for various online examinations conducted by TCS.



### MEFGI with NSE iT

Institutional partnership with NSE.iT Ltd., a 100% subsidiary of National Stock Exchange for conducting online examinations during weekends.



### MEFGI with M/s Attest Testing Services Ltd. (Aptech)

To conduct of online examinations for CMAT (Common Management Admission Test). This exam is being conducted by ATTEST on behalf of AICTE.



## EMPLOYER ACCOLADES



Hats off to the TIPO team for facilitating the Pool Campus in the Marwadi Technical Campus at a short notice. The Team could manage well – be it the coordination with the Colleges across Gujarat or the facilities for the registration, Technical and HR Interviews.... Quite impressed with the hospitality and the world class facilities.

› **HARISH K.L. - L&T IES**

The team Marwari helps corporate make the process of recruitment conducive and helps the organization to select best fit person for their requirement. The team Marwari have an attitude to build long term relationship with corporate and not pushing their students to get selected for the sake of increasing placement percentage. This helps us as company to get what we want without any favour or pressure. All and all a win win situation.

› **SUMEET JINDAL - GHCL Limited**

We have been visiting a lot many campuses for recruitment drives. But the Marwadi Education Foundation's Group of Institutions technical campus at Rajkot is in a class of its own. We are overwhelmingly impressed with the nobility and vision of the top management of the Group, the world-class Infrastructure and facilities for grooming the students, particularly the facilities in TIPO, employability skill development programs by the experienced trainers, the mentoring by the Faculty members, the online monitoring systems, the unique dress codes, and above all the hospitality arrangements during our Campus Drive. We will continue to strengthen our relations for a long time to come.

› **TARUN SHAH - ACTY SYSTEM INDIA PVT. LTD., Mumbai.**

The campus drive at Marwadi Technical Campus has been a very pleasant for our team. The excellent state-of-art facilities aimed at imparting the best education and grooming the corporate fit students speak volumes about the vision of the Management. Surely, the campus will emerge as one of the top-rated in the country in the next few years.

› **PRIYANKA MONIZ - SEARCE**

Highly impressed with the kind of state-of-the-art facilities, operational systems, learning halls, spacious central library, fully equipped computer labs, lush green ambiance in the campus, and special arrangements for the all round development of the students on campus.

The facilities in the TIPO building – be it the spacious GD or PI Rooms, the ICT enabled Seminar Hall or the hospitality arrangements are to be rated as the best in the industry. Hats off to the vision of the Top Management, for creating such an edifice of academic excellence in Saurashtra region.

› **AMIT MISHRA - ASCENDUM GLOBAL IT SERVICES & SOLUTIONS**

A wonderful campus with excellent infrastructure facilities. The special facilities and the efforts being put in by the Management for grooming the students to make them corporate fit, are quite laudable.

› **Col. T. HEGDE - INDIAN ARMY**

The Campus Drive at Marwadi Education Foundation's Technical Campus is a wonderful experience. Wow!!! Fabulous Campus with excellent facilities, systems, training cell, mentoring methodology, Quite impressed with the vision of the people behind the emerging epitome of academic excellence.

The campus is destined to be one among the top class Institutions in the country very soon. Happy to note that the management realized the importance of employability skills development and created an independent TIPO office to take of the same. This would definitely pave the way well-groomed students to be corporate fit to enter the industry in the near future.

› **Ms. SHRABANTI PATEL - JUST DIAL**

Marwadi Technical Campus is a marvelous campus with everything in place – the infrastructure, the facilities, the learning halls, the well educated faculty, the library, the computer labs, the sports and recreation facilities, the cafeteria, and the stand alone TIPO with excellent and spacious facilities for conducting Skill Development Programs by full time trainers, pre-placement talks, group discussions, interactive sessions, personal interviews, the hospitality arrangements, etc.. The Management's vision is laudable. No wonder if the Group catapults to be one among the top-rated academic institutions in the country in the next couple of years.

› **HIMANSHU JANI - ALEMBIC**

We always found the Management Students whom we had recruited in the Campus Drives over the past batches have been good, sincere and trustworthy. I was impressed with the excellent infrastructure and the special efforts being put in to groom the students to make them corporate fit by the independent Training and Placement Office with outstanding facilities.

› **HIMANSHU SRIVASTAVA - KOTAK MAHINDRA BANK**

Our visit to the technical campus has been a memorable experience. Quite thrilled with the campus buildings surrounded by lush green ambience, full-fledged world class facilities be it the learning halls, or library or computer labs, or the training and placement office with spacious GD and PI Rooms, or the ICT enabled seminar hall. We found the students too are disciplined and eager to learn.

› **SURESH AHLUWALIA - HINDUSTAN COCA-COLA BEVERAGES PVT. LTD.**

Our Pool Campus Drive at Marwadi Technical Campus in Rajkot is very well organized. All credit to the TIPO. The infrastructure, the green surroundings, the hospitality, the interaction with the students, the grooming of the students, the academic facilities, all in place. A wonderful campus with worldclass facilities.

› **AJAY FAGERIA - SHRIRAM VALUE SERVICES PVT. LTD.**

# **SOME OF OUR WELL PLACED STUDENTS OF 2013-14**





**SAMRAT CHHATRALA**  
BE – Mech



**SHREYA MAJITHIA**  
BE – EC



**PRACHI WAGHMARE**  
BE – IT



**Mahek Saperia**  
BE – Mech



**DARSHAN JOSHI**  
BE – Civil



**JAGSISH BHALSOD**  
BE – Civil



**JIGNESH BODA**  
BE – Civil



**BHARGAV SHOBHANA**  
BE – Civil



**ISHAN KAPADIA**  
BE – CE



**NIRAVKUMAR PANARA**  
BE – EE



**JAIDIP KOTAK**  
BE – IT



**SAGAR DAVE**  
BE – MECH







KARTIK KASHYAP  
BE - Mech



UMANG PATEL  
BE - Mech



PRASHANT JETHVA  
BE - Civil



URVASHI VARSANI  
BE - IT



MAYUR MAKWANA  
BE - Civil



KETAN GHETIYA  
BE - Mech



KARAN PANCHAMIA  
BE - CE



JINAL DOSHI  
BE - IT



JHALAK VITHALANI  
BE - CE



KOMAL TRIVEDI  
BE - CE



JAYKISHAN MANANI  
BE - Civil



KEDAR DESAI  
BE - Civil







Nirav Kherra  
BE - EE



**LARSEN & TOUBRO**



CHARUL DHAMSANIYA  
BE - EE



**LARSEN & TOUBRO**



SETU PAGHDAR  
BE - EE



**LARSEN & TOUBRO**



KARAN GOKANI  
BE - Mech



**LARSEN & TOUBRO**



RAJ MEHTA  
BE - IT

*eClinicalWorks*



JAY KANSAGRA  
BE - Mech



SHIVAM DESAI  
BE - EE



BHARGAV MAKWANA  
BE - Mech



ANIRUDDH TAMARIYA  
BE - EE



NANDKISHOR GONDALIYA  
BE - EE



DEVABHAI KHUNTI  
BE - IT



PRATAPSIKH JADEJA  
BE - EE





KRUPA RAJANI  
BE - IT



DARSHAN BAGTHARIA  
BE - Mech



JEREMY GONSALVES  
BE - EC



HIRAL PAMBHAR  
BE - CE



DHAIVAT MEHTA  
BE - CE



HIREN PANDYA  
BE - IT



NEMISH DOSHI  
BE - Mech



GHCL Limited



NIKHIL TRIVEDI  
BE - Mech



GHCL Limited



VIJAY VANIYA  
BE - Mech



GHCL Limited



DENISH VADHADIYA  
BE - Mech



FENIL MAKADIA  
BE - Mech



NISHANT ASHARA  
BE - Mech





SAGAR DESAI  
BE - Mech



JAYDEVSIKH ZALA  
BE - EE



MAYUR GHADIYA  
BE - CE



KHUSHBOOBA SOLANKI  
BE - IT



BHAVIK SARKHEDI  
B.E.-MECH.



MARGIT DAVE  
MBA



SHAIVI PANDEY  
MBA



JIGNASA CHAUHAN  
MBA



CHIRAG THADESHVAR  
MBA



SONU PANDYA  
MBA



PRAHANT CHOTHANI  
MCA



VINUS AKHEDIYA  
MCA





## OUR PLACEMENTS/PROJECTS FACILITATORS





## MESSAGE FROM PLACEMENT OFFICE



TIPO looks after the interests of the students and the recruiting organisations by acting as channel of communication between them. A database of recruiting organisations is available with the department, which is continuously updated. Students of the earlier batches have carved out a niche for themselves as assets to the organisations. This fact is reinforced by enthusiastic response from the corporate world in the form of placements. Various placement committees have been constituted for the placement of all the professional courses provided by us. These placement committees involve final year student representatives from all disciplines of Under-Graduate Courses as well as Post-Graduate Courses. Career Guidance and Personality Development Seminars, Workshops and Guest Lectures are organized regularly to improve the performance of students in job market. I feel confident that this pool of professionals will be another feature in the illustrious crown of MEFGI.

TIPO wishes all of them the very best in their future endeavours.





## CAMPUS DRIVE INFORMATION FORM



Name of the Organization \_\_\_\_\_

Name of the Concerned Executive \_\_\_\_\_

Designation \_\_\_\_\_

Address \_\_\_\_\_

\_\_\_\_\_ Pin Code \_\_\_\_\_

Telephone /Mobile No. \_\_\_\_\_ Fax No. \_\_\_\_\_

Email ID \_\_\_\_\_ Website \_\_\_\_\_

Please indicate your requirement details

DEPARTMENT	NO. OF POSITION	LOCATION	SALARY OFFERED	BRIEF JOB PROFILE



Would you like to deliver a Pre-Placement Talk?

☐ Yes ☐ No

If yes, please mention the date and time convenient to you

Date: \_\_\_\_\_ Time: \_\_\_\_\_

Presentation Material Required (for PPT/Interview)

☐ PC ☐ Laptop ☐ VCR ☐ TV/LCD  
☐ Projector ☐ OHP Any other  
(Please specify)

Which selection method would you prefer?  
(Please tick all methods you would like to use).

☐ Resume ☐ Written Test ☐ Group Discussion  
☐ Interview ☐ Psychometric Test

\_\_\_\_\_  
**Seal of the Organization**

\_\_\_\_\_  
**Signature of the Respondent**  
**Designation** \_\_\_\_\_

Kindly courier/Fax this form (duly completed) to

Corporate Manager (for MBA/PGDM/MCA)  
Manager-Placemets (for B.E./M.E.)  
Training, Information & Placement Office  
Marwadi Education Foundation's Group of Institutions  
Rajkot-Morbi Road, At & PO: Gauridad  
Rajkot 360003.

**Tel.** : 0281-2924155/156.

**Mobile** : +91-97277 24695/90999 74026 (For MBA/PGDM/MCA)

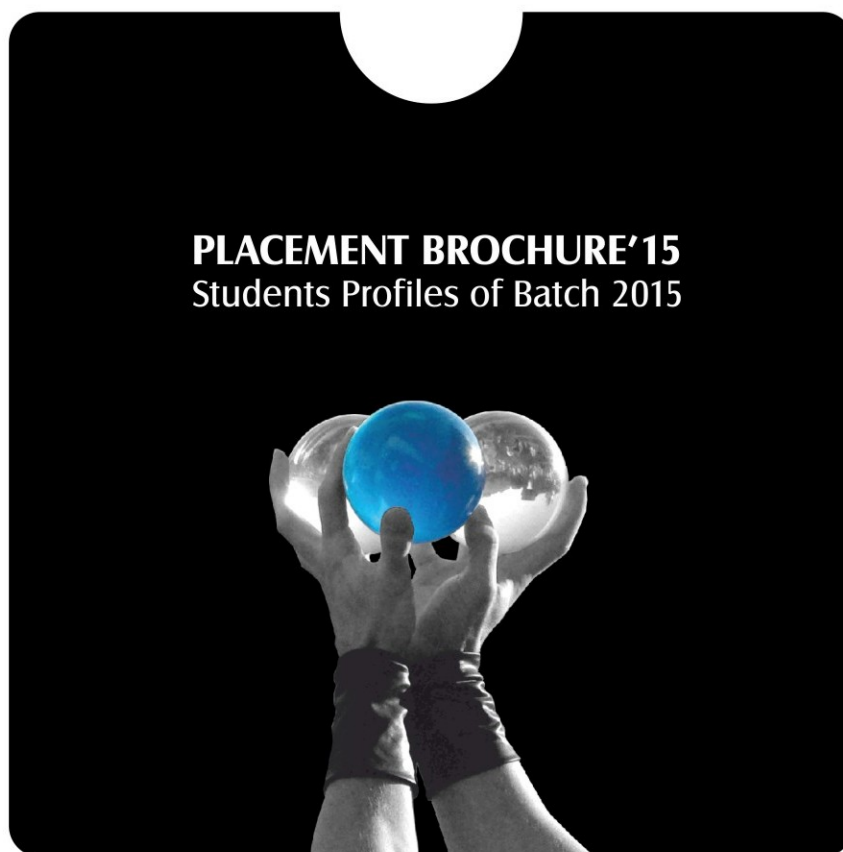
**Mobile** : +91-96876 80222 (For Engineering)

**Email** : placements@marwadieducation.edu.in

## STUDENT PROFILE



The docket below contains a customized auto-run CD comprising the Students Profiles of Batch 2015 – Engineering (B.E. and M.E.), Management (MBA and PGDM) and MCA who are getting ready to enter the corporate world. The CD has been customized keeping in view the convenience and requirements of the prospective employer/recruiter .



[www.marwadieducation.edu.in](http://www.marwadieducation.edu.in)



**Technical Campus**

Marwadi Education Foundation's Group of Institutions  
Rajkot-Morbi Road, At & PO : Gauridad, Rajkot.

Tel. : +91-281- 2923112, 2924155 / 56

Mobile : +91 97277 24661 / 62 / 63 / 64 / 65/ 66

[www.marwadieducation.edu.in](http://www.marwadieducation.edu.in) | [info@marwadieducation.edu.in](mailto:info@marwadieducation.edu.in)

**Corporate Office**

Marwadi Education Foundation's Group of Institutions  
'Marwadi Financial Plaza', Near Nana Mava Chowk, Off 150ft. Ring Road  
Rajkot 360 005. Gujarat. India