



Marwadi
education foundation



6th EDITION: 2016 - 2017

CAREER GUIDANCE BOOKLET



Marwadi Group Rajkot

PROMOTERS :

M/s. Marwadi Shares & Finance Ltd. - Rajkot

- All Financial products under one roof.
- 800+ Employees, 94 Branches, 1650 Sub-brokers and over 4 lakh clients.
- Ranked among top 10 Leading broking houses of India by Dun & Bradstreet, from 2008-09 to 2012-13.
- MSFL is one of BSE's top ten performers in the equity segment from 2006-07 to 2014-15. (contain of certificate received from BSE.)

M/s. Chandarana Intermediaries Brokers Pvt. Ltd. - Rajkot

- Well known for its Expertise in Arbitrage & Technical Trading in India since last 16 years.
- Member of Saurashtra-Kutch Stock Exchange since last 20 years.
- 100+ Employees.





Marwadi Education Foundation's Group of Institutions (MEFGI) (2016 - 17)

Faculty of Engineering (Affiliated with GTU)

Bachelor of Engineering (B.E.)

Shift 1

Electronics & Communication	60 seats	Electrical Engineering	120 seats
Computer Engineering	120 seats	Environmental Engineering	60 seats
Information Technology	60 seats	Instrumentation & Control	60 seats
Mechanical Engineering	120 seats	Automobile Engineering	60 seats
Civil Engineering	120 seats		

Shift 2

Mechanical Engineering	60 seats
Civil Engineering	60 seats
Electrical Engineering	60 seats
Environmental Engineering	60 seats



Marwadi Education Foundation's Group of Institutions (MEFGI) (2016 - 17)

Faculty of Management (Affiliated with GTU)

Shift 1

Master of Business Administration (MBA) 240 seats

Master in Applied Management (MAM) 120 seats

Shift 2

Master of Business Administration (MBA) 60 seats

Faculty of Business Management (Affiliated with Marwadi University)

Shift 1

Post Graduate Diploma in Management 60 seats

Master of Business Administration (MBA) 180 seats

Shift 2

Master of Business Administration (MBA) 60 seats

Faculty of Computer Applications (Affiliated with GTU)

Shift 1

Master of Computer Applications (MCA) 240 seats

MCA Dual Degree (Integrated Course) 60 seats

Shift 2

Master of Computer Applications (MCA) 120 seats





Marwadi Education Foundation's Group of Institutions (MEFGI) (2016 - 17)

Faculty of Technology (Affiliated with Marwadi University) Bachelor of Engineering (B.E.)

Shift 1

Electronics & Communication	60 seats
Computer Engineering	60 seats
Mechanical Engineering	120 seats
Civil Engineering	120 seats
Electrical Engineering	120 seats
Automobile Engineering	60 seats
Information Technology	60 seats
Chemical Engineering	60 seats

Shift 2

Mechanical Engineering	60 seats
Civil Engineering	60 seats
Automobile Engineering	60 seats





Marwadi Education Foundation's Group of Institutions (MEFGI) (2016 - 17)

Faculty of P.G. Studies & Research In Engineering & Technology (Affiliated with GTU)

Master of Engineering M.E. and Ph.D. Programs

Shift 1

Electronics & Communication	36 seats
Computer Engineering	36 seats
Mechanical Engineering - CAD/CAM	18 seats
Civil Engineering - Structural Engineering	18 seats
Electrical Engineering - Power Electronics & Electrical Drives	18 seats
Electrical Engineering	18 seats
Electronics & Communication - VLSI Engineering	18 seats
Mechanical Engineering - Thermal Engineering	18 seats
Civil Engineering - Transport Engineering	18 seats

Shift 1

Computer Engineering (B.E.)	60 seats
Civil Engineering (B.E.)	60 seats

Shift 2

Mechanical Engineering (B.E.)	120 seats
-------------------------------	-----------

Faculty of Architecture (Affiliated with Marwadi University)

Architecture Program (proposed from 2015-16)	40 seats
--	----------

Institute offers competent faculty as Research supervisors/Guides for Ph.D. Programs





Technical Campus

TOTAL SEATS

Bachelor of Engineering (B.E.)

Mechanical Engineering	480 seats	Instrumentation & Control	60 seats
Electronics & Communication	120 seats	Chemical Engineering	60 seats
Computer Engineering	240 seats	No. of Seats :	2100
Information Technology	120 seats		
Civil Engineering	420 seats		
Electrical Engineering	300 seats		
Environmental Engineering	120 seats		
Automobile Engineering	180 seats		

Master of Engineering (M.E.)

Mechanical Engineering - CAD/CAM	18 seats	Electrical Engineering	18 seats
Electronics & Communication	36 seats	VLSI Engineering	36 seats
Computer Engineering	36 seats	Thermal Engineering	18 seats
Civil Engineering - Structural Engineering	18 seats	Transport Engineering	18 seats
Power Electronics & Elec. Drives	18 seats	No. of Seats :	198

Master of Business Administration (MBA)

540 seats

Master of Computer Applications (MCA)

360 seats

Post Graduate Diploma in Management (PGDM)

60 seats

MAM Dual Degree Course(Five Year Integrated Course)

120 seats

MCA Dual Degree Course

60 seats

Architecture

40 seats

TOTAL APPROVED INTAKE :

3478



Marwadi University Courses (2016 - 17)

Faculty of Science Bachelor of Science - B.Sc.

B.Sc. - Micro Biology	60 Seats
B.Sc. - Bio Chemistry	60 Seats
B.Sc. - Chemistry	60 Seats
B.Sc. - Maths	45 Seats
B.Sc. - Physics	45 Seats





Marwadi University Courses (2016 - 17)

Faculty of Science Master of Science - M.Sc.

M.Sc. - Mathematics	20 Seats
M.Sc. - IT	60 Seats
M.Sc. - Chemistry	20 Seats
M.Sc. - Microbiology	20 Seats
M.Sc. - Physics	20 Seats



Marwadi University Courses
(2016 - 17)

Faculty of Liberal Studies

Bachelor of Commerce - B.Com. (Hons)

60 Seats

Bachelor of Business Administration (BBA)

60 Seats



Marwadi University Courses (2016 - 17)

Faculty of Computer Application

Bachelor of Computer Application	60 Seats
Post Graduate Diploma in Computer Applications	30 Seats

Faculty of Arts

Master of Arts (M.A. English)	20 Seats
Bachelor of Arts (B.A. Design)	20 Seats





Engineering At MEFGI

Academics, Technology & Research.....

● Teachers

- All (500+) Teachers are Post Graduates.
- Highest Density of Ph. D. holders
- Diverse Faculty from Stanford, IIT, NIT, BITS, MSU, Delhi University etc.

● Learning Space & Labs:

- Theater Type, Interactive, ICT Enabled world class Infrastructure.
- Sophisticated and Precision Equipments from leading Multinational Companies.
- Sophisticated High end Simulation Software. [virtual practical capabilities]

● Teaching – learning and Delivery

- Team based, interactive teaching process.
- Three-tier Experiential Teaching - Learning Model.
 - ┆ Theory & Laboratory.
 - ┆ Virtual Practices.
 - ┆ Special Skilling and Development.
- Virtual Learning: e-access.
 - ┆ Interactive Software based laboratory.
 - ┆ e-notes, e-databank, e-experiment, e-exams
- Diversity in Teaching:
 - ┆ Faculty from Industry Component – 15%.
 - ┆ Faculty from Premier Institutions Component – 15%.
 - ┆ In house Faculty Component -70%.

● **Research:**

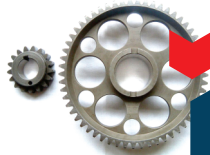
- Specialized Equipment & Software for advanced level Skilling & Training.
- Independent Research & Innovation Center.
- Technology Clubs and Incubation cell – To unleash Students Ideas.
- Technical Chapters and knowledge Academies.
- Research, Scientific Articles & Book Publication by Teachers.

● **Employment & Training**

- Soft skills including – Life, Living and Social
- Language and communication skills
- Specialized Technical Software and Computer skills
- Critical Thinking & Mathematical skills
- Entrepreneurial and Project Management Skills
- Ethics and Culture
- Industry Projects & Research
- Technical Report Writing

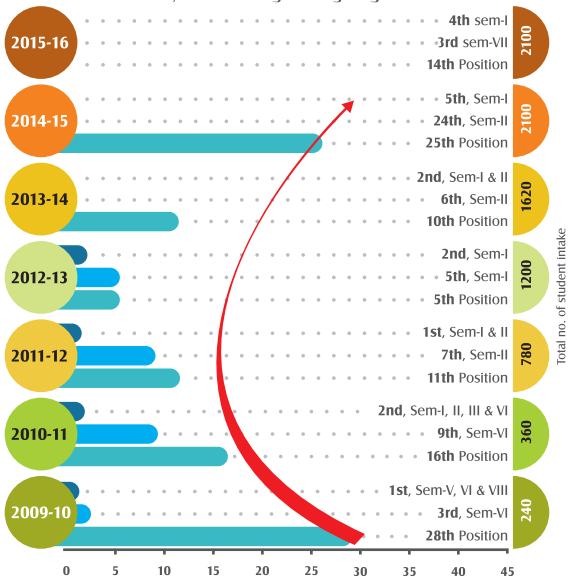
● **Infrastructure:**

- Campus Habitat & Environment: A world class, Landscaped 25 acres, State-of-Art 175+ Crore infrastructure facility.
- Technology Backbone: Wi-Fi, Networked, ICT enabled, 250 MBPS Internet BW with Simulation & Kiosks, computing & simulation facility with Digital Knowledge Resource & Conferencing.
- Recreational & Health: 4 acres sport complex, lake- side track for walking & jogging: 1000+ Capacity Auditorium & 750+ Capacity Amphitheater. Health club with twin-food court & pristine Landscaping at campus.



Academic: Achievements

The graph below captures the academic performance of students admitted each year under Engineering Program

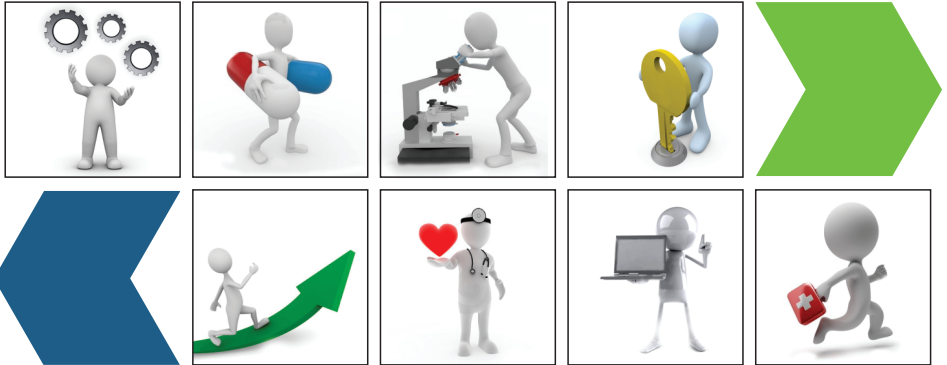


- Choice Filling
- Rank in Gujarat SFI
- Rank in Saurashtra SFI



CAREER GUIDANCE SEMINAR ON
OPPORTUNITIES IN HIGHER EDUCATION

Marwadi Education Foundation Presents



Your gateway to the temple of knowledge and wisdom

CAREER GUIDANCE SEMINAR ON

OPPORTUNITIES IN HIGHER EDUCATION



Presented by
Dr. Yogesh Kosta
Director

Marwadi Education Foundation's Group of Institutions

Presentation Plan & CONTENT



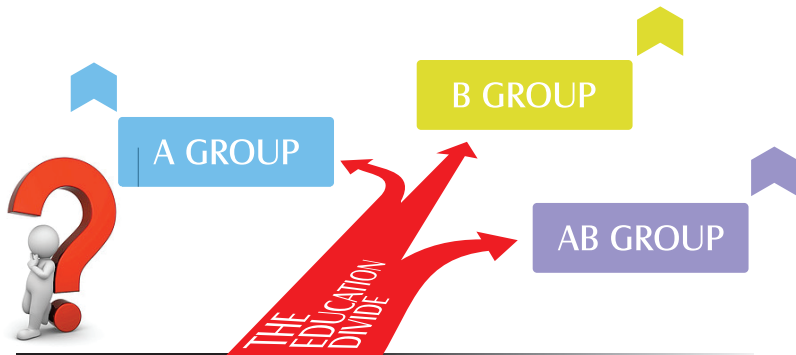
The counseling paradox....



Importance

- › Illiteracy V/s Literacy
- › Lack of professionals (advise >>business)
- › National goals
- › Influencing factors
 - › Our own students/alumnus
 - › Word of mouth
 - › Parents
 - › Friends
 - › Relatives
 - › Media

YOUR OPTIONS AFTER 12th Std.



12th
SCIENCE

WELL & WEALTH OF OPPORTUNITIES.....

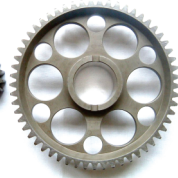
Options: Classifications - exploded



A GROUP

12th
SCIENCE

- **Engineering**
- **Others**



Options: Classifications - exploded



B GROUP

12th
SCIENCE

- **Medical**
- **Dental**
- **Pharmacy**
- **Physiotherapy**
- **Ayurveda**
- **Homeopathic**
- **Nursing**
- **Others**



Options: Classifications - exploded



AB GROUP

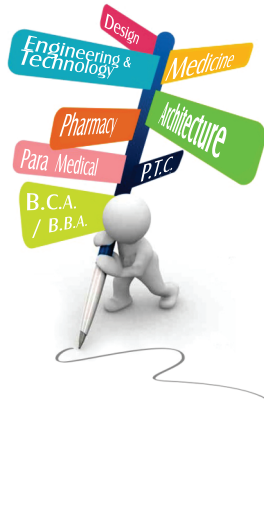
12th
SCIENCE



- All courses offered to A & B group can be availed



DIRECTION MANY; GOALS → GOAL; STRATEGY.....



- Medicine
- Dental
- Para Medical
- Pharmacy
- Fashion & other designing
- B.Sc.
- P.T.C.
- B.C.A. / B.B.A.
- Architecture
- Engineering & Technology



Showcase: Institutions in Gujarat



Engineering		Pharmacy	
Govt./GIA	19 (16+3)	Govt./GIA	04 (1+3)
Unaided (SFI)	107	Unaided (SFI)	62
PPP	02		
Autonomous	01		
Total	129	Total	66

HIGHER EDUCATION OPPORTUNITIES IN GUJARAT.....
Data as on year 2015 - 16



Institutions in Gujarat: Medical & Paramedical



GOVT / GIA		UNAIDED (SFI)
MEDICAL	6+14=20	12
DENTAL	2+11=13	10
AYURVEDA	5 G + 1 Uni/1 GI	5
HOMEOPATHY	0/4	13
NURSING	8	44
PHYSIOTHERAPY	5	45
OPHTHOMETRIC	0	4
ORTHOTICS	1- Govt	0
NATUROPATHY	0- Govt	1
AUDIOLOGY	0- Govt	1



Technology & Engineering

Bachelor of Engineering 4 years full time course (B.E or B.Tech.)

No. of Seats in Gujarat :
2015-16

71799

Tuition fees/year :

Govt./GIA – Rs.1500
SFI – **Rs.46,000 to 1,91,000**

Post graduate courses –

No. of Seats in Gujarat :
2015-16

7126

M.E., M. Tech.
SFI – **Rs. 72,000 to 191,000**



Technology & Engineering

1.Core branches

2.New-age branches

3.Industrial engineering branches

4.Hybrid branches

5.Agricultural engineering ,
dairy and veterinary courses /
branches





Technology & Engineering

Core-Branches

- Mechanical Engineering
- Electrical Engineering
- Civil Engineering
- Chemical Engineering





Technology & Engineering

New-Age Branches

- Electronics & Communications
- Computer Engineering
- Information Technology
- Bio-Medical & Instrumentation
- Instrumentation & Control Engineering
- Automobile
- Mechatronics
- Aeronautical
- Environmental Engineering
- And many more - @ 100+





Technology & Engineering

Industrial engineering branches

- Industrial Engineering
- Plastic Technology
- Rubber Technology
- Textile Technology / Engineering
- Power Electronics
- Production Engineering
- Bio-Technology
- Water Management
- Environment Engg.
- Food Processing
- Metallurgy
- Mining
- Marine Engineering



Technology & Engineering

Hybrid Branches

- Mechatronics
- Instrumentation and control engineering
- Environmental Planning/management
- Energy systems engineering & mgmt
- Nanotechnology
- Biotechnology
- Geoinformatics /technology
- Information and communication networks engineering.
- Illumination engineering/tech.
- Material science and technology





Technology & Engineering

Agricultural engineering , dairy and veterinary courses/ branches

- B. Sc. (Agriculture) – 4 Years
- B. Sc. (Agricultural Engineering) – 4 Years
- B. Sc. (Horticulture) – 4 Years
- B. Sc. (Forestry) – 4 Years
- B. Sc. (Fisheries) – 4 Years
- B. Tech. (Dairy Technology) - 4 years
- B. Sc. (Veterinary Science & Animal husbandry) – 4 Years



Technology & Engineering

Information showcasing the total number of seats across institutional boundary

Branches	Govt.+ GIA	SFI	Total
Elec & Comm	1530	5475	7005
Computer	1125	8805	9930
Info Tech	570	3825	4395
Mechanical	1850	16330	18180
Electrical	1490	9489	10979
Civil	1780	10960	12740
Environmental Engg.	240	180	420
Automobile Engg.	300	2160	2460
Instrumentation & Control	465	525	990
Chemical Engg.	504	1566	2070
Other	1120	1510	2630

Total number of seats in GUJARAT

71799

Technology & Engineering

Consolidated definition of the total number of seats across branch boundary in Gujarat

BRANCH	2010-11	2011-12	2012-13	2013-14	2014-15	2015-16
Electronics & Communication	6750	7170	7230	6990	7125	7005
Computer Engineering	4620	5400	5640	6090	9720	9930
Information Technology	3405	3465	3405	3555	4305	4395
Mechanical Engineering	7050	9510	12810	16230	18150	18180
Electrical Engineering	3989	5249	7049	9613	11149	10979
Civil Engineering	4520	6200	8210	10294	12650	12740
Environmental Engineering	N/A	360	360	360	420	420
Automobile Engineering	N/A	N/A	1320	1980	2430	2460
Instrumentation & Control	N/A	N/A	N/A	870	990	990
Chemical Engineering	N/A	N/A	N/A	870	1950	2070
OTHERS	6769	6889	6849	6979	2390	2630
TOTAL	37103	44243	52873	62961	71279	71799



Pharmacy

Consolidated definition of the total number of seats across branch boundary in Gujarat

Bachelor of Pharmacy 4 years full time course

No. of Colleges in Gujarat:

Govt.: 1 + GIA: 3 + SFI: 64

No. of seats in Gujarat: 4324

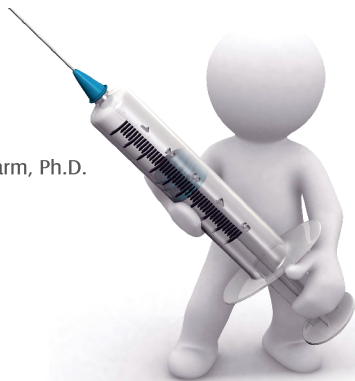
Tuition fees/year :

Govt./GIA – Rs.2100

SFI – Rs.42,000 to 1,95,980

Post graduate courses - M.Pharm, Ph.D.

SFI – Rs.80,000 to 2,80,000





Architecture

Bachelor of Architecture 5 years full time course

No. of Colleges in Gujarat:

Govt.: 3 + SFI: 25

No. of seats in Gujarat: 1618

B.Arch. (Interior Design): 48

B.Arch. (Building Construction Tech): 55

Tuition fees/year :

SFI – Rs.30,000 to 1,56,000





MEDICINE

M.B.B.S.

Duration –5 Years Study + 1 Year Internship

No. of Colleges in Gujarat:

Govt.: 6 + SFI: 14

No. of Seats in Gujarat : 3080

Tuition fees/year:

Govt./GIA – Rs.6000

SFI – Rs.2.75 to 4.6 lacs /year

Post Graduate Options :

M.D., M.S.





MEDICINE

Others B.D.S.

Bachelor of Dental Surgery: 5 years full time course + 1 Year Internship

No. of Colleges in Gujarat:

Govt.: 2 + SFI: 11

No. of Seats in Gujarat : 1155

Tuition fees/year:

Govt./GIA – Rs.4000

SFI – Rs.2 to 3 lacs /year

Post graduation courses –

M.D.S.- Master of Dental Science





MEDICINE

Others **Ayurveda**

Bachelor of Ayurvedic Medicine & Surgery
- B.A.M.S. (Ayurvedacharya)

No. of Colleges in Gujarat:
Govt.: 5 + GIA: 1 + SFI: 5
5 ½ years full time course
No. of seats in Gujarat : 610

Tuition fees/year:
Govt. – Rs.1000
GIA – Rs.25,000
SFI – Rs.1.80 to 2.5 lacs

Post graduate courses M.D.(Ayu), Ph.D. (Ayu)





MEDICINE

Homeopathy

Bachelor of Homeopathy
5 ½ years full time course

No. of Colleges in Gujarat:
GIA: 4 + SFI: 13

No. of seats in Gujarat : 1625
Tuition fees/year:
GIA – Rs.25,000
SFI – Rs.45,000 to 57,000

Post Graduate course – M.D.





PARA MEDICAL

PARA MEDICAL



Nursing



Physiotherapy





Physiotherapy

Bachelor of Physiotherapy 4 years full time course

No. of colleges in Gujarat:

Govt.: 5 + SFI: 45

No. of seats in Gujarat :2645

Tuition fees/year:

Govt. – Rs.3000

SFI – Rs.50,000 to 1,64,000

Post graduation courses – M.P.T.





Nursing

B.Sc. Nursing: 3-4 years full time course
No. of Colleges in Gujarat:
Govt.: 8 + SFI: 44
No. of Seats in Gujarat: 2400

Tuition fees/year:
Govt. – Rs.145
SFI – Rs. 60,000 to 1,26,000

Post graduate courses –
M.Sc. Nursing



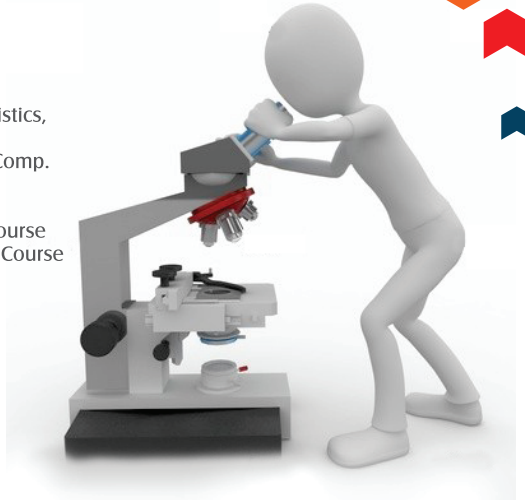


GENERAL SCIENCE

B.Sc. – 3 - Years

Physics, Chemistry, Maths, Statistics,
Botany, Zoology, Microbiology,
Biotech, Bio chem., Genetics, Comp.
Sci., Genetics, Electronics, etc.

M.Sc. (IT) – 5 Year integrated course
M.Sc. (Biotechnology) – 5 Year Course





Others - OPTIONS

- B.B.A. and M.B.A.
- BHM (Hotel Management)
- B.C.A.
- NID
- NIFT
- Specialty Diploma in the branches of Medical, Paramedical, Engineering, Arts and Commerce areas.



Others - OPTIONS

- B. Sc. - 3 Years
- L.L.B. - 5 Years
- P.T.C. - 2 Years
- B.B.A. - 3 Years
- B.C.A. - 3 Years
- B. P. Ed. - 3 Years
- Integrated science courses
- Dual degree courses
(IISc, IGNOU, JNU etc)





Other specialized and developing fields/areas

- C.A., I.C.W.A.
- Advertising
- Airlines
- Beauty Care
- Civil Services (I.A.S., I.P.S., I.F.S. etc.)
- Company Secretary
- Animation
- Stock Broking





Other fields

- Fashion Designing
- Geology
- Indian Air Force
- Indian Navy
- Interior Design
- Medical Transcription
- Oceanography
- Aerospace Engg.
- Energy Engg.



21st Century Courses / Fields

- Nuclear Engg.
- Computer System Analysis
- Data Processing
- Enterprise Resource Planning
- Hardware Engineering
- Event Management
- Export Management
- Finance Management
- Energy Audit
- Environment





21st Century Courses / Fields

- Human Resource
- Industrial Production
- Management Analysis
- Materials And Purchase
- Rural Management





Admissions to Professional Courses

State Level Professional Institutes (Through ACPC only)		National Institutes
Govt. Colleges	Unaided Colleges	
100% by Govt. Committee	75% by Govt. & 25% Mgmt. /NRI Quota	PMT - AIIMS NIT- AIEEE IIT- JEE NID/NIFT Entrance Exam



Minimum Quintessential – Evaluating / Selecting an Institute

Physical Walkthrough – Visit

- **Approvals**
AICTE /PCI/MCI, etc.
University Affiliation
- **Management**
Motive /Mission
Transparency
Infrastructure & Support Services
Buildings
Classrooms & Laboratories
Library, WiFi, Internet and Computer Facilities
Services like, Canteen, Sports, Medical Help,
Hostel and Transportation
General Campus Environment
- **Academics**
Well qualified & sufficient teachers
Knowledge resources and ICT
Academic results
Placements, Industry & Training
Co-Curricular & Extra-Curricular Activities
- **Accreditation - highest mark of quality**
UG/PG Programs (NBA-AICTE)
Research, Consultancy & PROJECTS





At the time of Program - Course selection

Do's

Give priority to personal goal – What u like best -
Demand of Industry / Market – Listen to experts -
Future courses and scopes – Deep Look at verticals -
Deeply scrutinize the final options – Teaming [Experts,
Guru, Awareness-SELF, Parents (*)]
Identify possibilities and substitutes – Alternate paths
to achieving your goal.

Don't's

Pressure of others
Convenience
Follow friends
Money matters

Advice to parents (*) – “let your child go.....for,.....”





Grand quintessential for an Institute

Some Quality Assessment Parameters

- Accreditations
- GATE, GRE, GMAT, Placement in reputed companies
- Research & Development Centre
- Approvals : AICTE / University Affiliation
- Management
Policy of Transparency
- Prestige
Infrastructure
- Laboratories / Classrooms / Buildings / Transportation / Hostel and recreation
Academics
- Well qualified & trained teachers
Consistency in Academic results / 100% Placements / Industrial Visits
Technical chapters Professional academies / Innovation, entrepreneurship
& Research Center



At Marwadi

All eligible branches geared for accreditation

- Scholarships for brilliant students*
- MOU with Industries
- Approvals AICTE / Gujarat Technological University
- Management
 - A decade old established marwadi market and performance trust
- Infrastructure
 - WiFi enabled campus
 - Ultra modern laboratories
 - Theater type, ICT and Internet enabled, MMP facility A/C class
 - Hostel, transportation, gymnasium, sports and recreation facilities
- Academics
 - Faculty from Stanford, IIT, NIT, DU and other accredited institutes and reputed company's
 - Recognized Research Guides for Ph.D
 - M.Tech. & Ph.D. qualified teachers / Deep Industry linkages / Research & consultancy
 - Research publications / Sponsored Projects / Idea-club Incubator

* As per Institute policy



Therefore; **The Mantra for Success**

- Decision making (Collective)
- Planning (Fruit)
- Discipline (Focus)
- Consistency (Performance)
- Determination (Transcend)





Growth Projections In Various Sectors

Sector	Sales (Rs. in Crore)	Current Size of Sectors (Rs. in Crore)	No of Companies
Computer-SW Larg	248,157.13	1,196,137.34	16
Banks-Pvt Sector	301,294.96	825,849.45	152
Phrm-I-BD For/Lr	57,349.14	480,050.27	38
Refineries	1,623,853.50	457,040.90	23
Banks-Pub Sector	715,187.64	443,957.51	36
Mining/Minerals	160,536.24	373,059.45	175
Power Generation	375,422.45	369,420.55	545
Per Care-MNC	48,937.04	257,158.64	10
Fin-Hsg-Large	42,591.59	241,502.61	364
Cement-Maj-North	66,391.74	216,233.59	24
Engg-Tunkey Serv	93,295.26	190,209.61	192

Source: Capital Line Data base



Try Profiling Your Career Path

YOUR "DO" ATTRIBUTE	IDEAL WEIGHT	YOUR ORDER OF PREFERENCE (REDUCE IDEAL WEIGHT)			REMARKS
		1	2	3	
YOUR DREAM CAREER TRACK (PROFESSION)	50				Your order of preference
TREND SPOTTING - MARKET DEMAND	20				Alignment with your order of preference
DEEPLY SCRUTINIZE (DATA: SECTOR SIZE, GROWTH, COMPANIES, JOBS)	10				
ALTERNATE PATHS - SUBSTITUTES (TO REACH YOUR DREAM CAREER GOALS)	(-10)	5	3	2	Subtract as indicated if applicable
PARENTS	5				Preference
GURU'S + MEDIA+ EXPERTS+GOVT. PROMOTION	10				As Discussed
FRIENDS AND COLLEAGUES, ETC.	5			
YOUR PROPOSED CAREER PATH SELECTION ORDER IS THE HIGHEST MAXIMUM WEIGHT VALUE OF THE TOTAL WEIGHT AGAINST EACH VERTICAL EQUATED ON A 100 POINT SCALE DEFINED UNDER "YOUR ORDER OF PREFERENCE" IN ROW - 1, COLUMN - 3	100				Selection order is the highest numeric value obtained

FAQs

Q **Should we select institution first or branch?**

A Institute is more important than branch.

Q **Can I change my branch/specialization after graduation?**

A Yes, many institutions permit flexibility across disciplines and specializations.

Q **Which branch should I choose, Core or New-age or my-choice?**

A Economic growth is organic and envisage collective response in terms of development from all sectors.

Q **What opportunity I have for job after I graduate?**

A Ample, depends upon your skills, knowledge and attitude.

Q **Do you place students?**

A A special training, information and placement cell with qualified and experienced staff has been established since day-one (inception), taking care of placement activities of students for the purpose of industry grand project, training, visits, employment, seeking career guidance and preparing for admissions to institutions offering master's and other higher professional education.

Q **Do companies visit your campus?**

A Yes, in fact we are in the process of getting accreditation from many leading Multinationals Companies.

Q **Does your institution provide scholarships & hostels?**

A Yes, kindly refer our website & visit our student section for more details.



THOUGHTS

..... destination ???



MANY

THANKS



Any Questions ???



A peep into the *Marwadi* crucible

- The engine of transformation
- Your gateway to dream career
- Your expressway to future





OUR VISION: Nature & Wisdom are Never at Strife

Nature is Supreme – Learning from nature

Our vision is to address challenges facing our society and planet through sterile education that builds capacity of our students and empower them through their innovative thinking practice and character building that will ultimately manifest to boost creativity and responsibility utilizing the limited natural resources to meet with the challenges of the 21st century.



OUR MISSION:

To produce creative, responsible and informed professionals. | To produce individuals that are digital-age literate, inventive thinkers, effective communicators and highly productive. | To deliver cost-effective quality education | To offer world-class cross disciplinary education in strategic sectors of economy through well devised and synchronized delivery structure and system, designed to tickle the creative intelligence and enhance the productivity of individuals. | To provide a conducive environment that enable and promote individuals to creatively interact, coordinate, disseminate & examine changes, opinion & concept that will enable students to experience higher level of learning acquired through constant immersion that lead towards development of characters, virtues, value & technical skills.



OUR PRACTICED VALUES:

- Concern for Character
- Concern for Knowledge
- Concern for Practice
- Concern for Academic Excellence
- Concern to be creative
- Respect for the individual
- Concern for the Society
- Transparency in action





Scholarships*

- Attractive scholarship up to 100% tuition fee waiver to meritorious students.
- **Special scholarship scheme available for girl students.**

For details refer www.marwadieducation.edu.in/scholarship16-17.htm



*Subject to terms and condition and at the discretion of management



Contact Us

Admission Helpline (Between 8am and 5pm)

Cell : +91 97277 24661 / 62 / 63 / 64 / 65/ 66

Tel : +91-281-2923112, 2924155 / 56

Corporate Office :

Marwadi Education Foundation's Group of Institutions
'Marwadi Financial Plaza', Near Nana Mava Chowk,
Off 150ft. Ring Road, Rajkot 360 005. Gujarat. India

Technical Campus :

Rajkot-Morbi Highway, At : Gauridad, Rajkot 360 003.
Email: info@marwadieducation.edu.in



Follow Us



www.facebook.com/marwadieducation



www.pinterest.com/mefgroup/marwadieducation



www.twitter.com/mefgroup



www.plus.google.com/+marwadieducation



www.youtube.com/user/marwadieducation



www.linkedin.com/in/marwadieducation



Smartphone Apps



www.marwadieducation.edu.in/downloadAndroidApp



www.marwadieducation.edu.in/downloadiphoneApp



Marwadi
education foundation

www.marwadieducation.edu.in



Marwadi
UNIVERSITY

www.marwadiuniversity.in

